



## Assembly and instructions for use

### Technical data:

Standard version	3 m *
Maximum length	10 m **
Net weight entry + exit	282 kg
Weight of intermediate piece	40 kg

\*2 m version available on request

\*\*7 intermediate pieces

### Note

Before assembly and use, the sheet pile ladder must be checked for proper condition and function of all parts!

Damaged parts must **not** be used!

# SHEET PILE LADDER

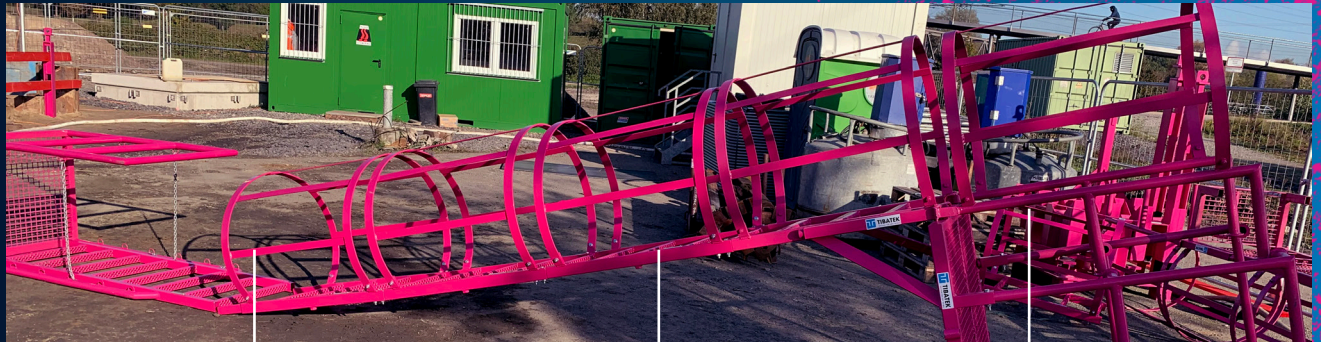
A low-angle, upward-looking photograph of a bright pink sheet pile ladder installed within a deep, narrow trench. The ladder's rungs and side rails are clearly visible, extending towards the top of the frame. The trench walls are made of dark, weathered metal sheet piling. The background is a solid blue sky, and there are some pinkish-red speckles or dust particles visible in the air around the ladder.



# Assembly of spacers

(depending on the trench depth)

1.



Lower platform

Intermediate piece

Upper platform

The standard version of the sheet pile ladder is 3 m long (net weight 282 kg)

2.



The length of the sheet pile ladder can be varied using a screw system. 1 m long intermediate pieces (own weight: 40 kg) extend the sheet pile ladder up to max. 10 m.

3.



The spacers are screwed together using 4 M12 bolts (SW19, strength min. 8.8) with self-locking nuts.

More insights:



**TIBATEK**®

A company of the:

**FIRMENGRUPPE  
STEWERING**



## Mounting the supports and brackets

1.



All the individual parts required for assembly are located on the top and bottom platforms of the ladder.

All support tubes and the feeder tube for the single ladder are attached to the top platform.

**Up to 7 m depth 4 support tubes**  
**From 7 m depth 6 support tubes**

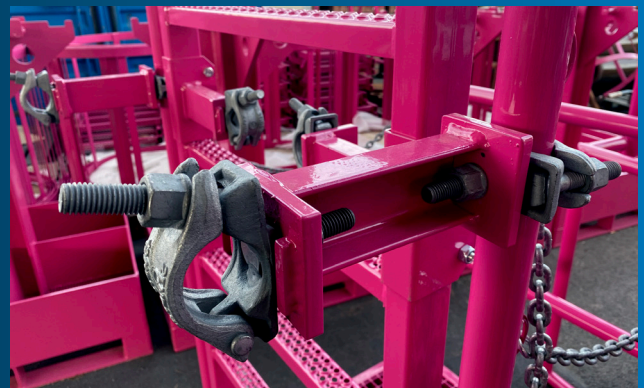


All the brackets required for the pipes are mounted on the lower platform.

2.



Loosen the holder for the feeder ear on the clamp and turn it 180° to the back of the ladder. to the back of the ladder.



The height of the bracket can be adjusted as required. Then fit the feeder tube into the couplings.

More insights:



**TIBATEK®**

A company of the:

**FIRMGROUPE  
STEWERING**



## Mounting the supports and brackets

3.



The brackets arranged in the centre of the **lower platform** for transport are mounted on **any one** (up to 7 m) or two (from 7 m) intermediate piece(s). They are used to hold the support tubes.



4.



The lower brackets are turned 180° downwards and screwed in place so that the lower support tubes can be fitted underneath the platform.



More insights:



**TIBATEK®**

A company of the:





## | Mounting the supports and brackets

5.



The support tubes are inserted into the clamps before the ladder is lowered and locked in the desired position. Additionally secured with bolts and split pins!



**Important!**

Distance to the wall/railing min. 150 mm for sufficient step safety!

More insights:



**TIBATEK®**

A company of the:

**FIRMENGRUPPE  
STEWERING**



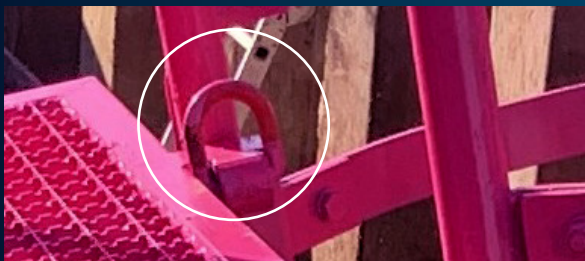
## Attaching the sheet pile ladder

1.



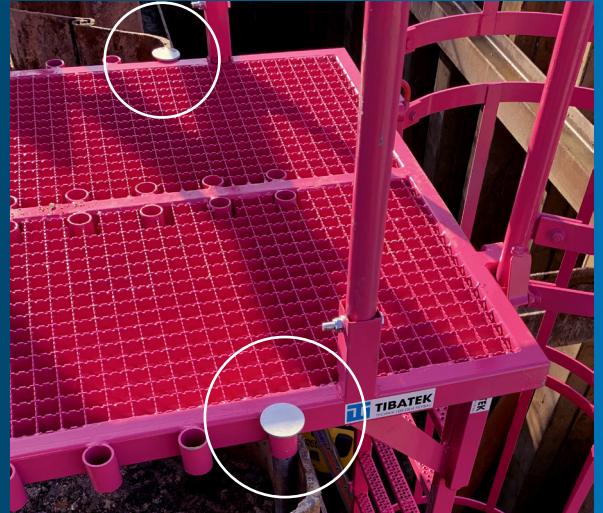
Suspension using an excavator. The fall protection system must be closed in the edge areas during this process.

2.



**2 anchor points** for attaching lifting chains are provided on the upper platform are provided.

3.



As soon as the upper platform is in place, the retaining **bolts** must be inserted into the corresponding holes and secured with split pins.

4.



If necessary, the support tubes can now be readjusted to align the ladder vertically.

More insights:



**TIBATEK®**

A company of the:

**FIRMENGRUPPE  
STEWERING**



## | Fastening the single ladder

1.



The leaning ladder is placed against the cross tube on the leaning side. This is then pushed in so far that the single ladder is firmly clamped. The tube clamps are then tightened.

2.



The height of the cross tube can be changed depending on the position in which it is placed. The ladder can also be secured against slipping with a chain.

More insights:



**TIBATEK®**

A company of the:





## | Fully assembled sheet pile ladder



The sheet pile ladder is now assembled ready for use

### Recurring inspections:

In accordance with the Industrial Safety Regulation, the sheet pile ladder must be inspected at least **once a year**, but at shorter intervals if necessary.



### Note

Clean coarse dirt from footwear before descending and ascending! For this purpose, the upper and lower platforms are designed as gratings.

**Warning!**

After complete assembly and before first use, the ladder must now be visually inspected by a **competent person** (in accordance with **TRBS 1203**)!

The sheet pile ladder may only be used by **one person** at a time.

More insights:



**TIBATEK**®

A company of the:

